

Spoke Arm Flood Lighting

Four Arm Pole Top Slip Fitter



FEATURES & SPECIFICATIONS

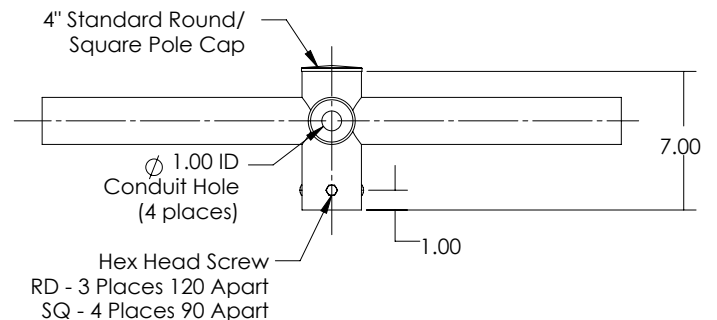
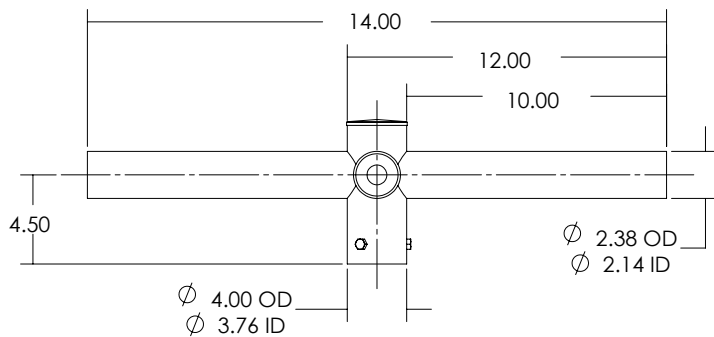
- Spoke Arm flood lighting slip fitter slips inside the top of a square or round straight pole for a virtually seamless transition from pole to post top light fixtures.
- Rugged Die Cast Steel tenon fitter
- Allows you to seamlessly integrate Bright LED lighting fixtures onto a 2-3/8" O.D. tenon.
- Removable end caps are easy access to wires connection, installation, and replacing the existing post top mount
- EPA: 0.7
- Optional: Tenon fitter can be finished with Bright LED's polyester powder coat finishing process. This finish withstands extreme weather changes without cracking or peeling. Other standard finishes also available. Consult factory.
- Finish: Standard Dark Bronze

ORDERING GUIDE

TYPICAL ORDER EXAMPLE: **BRT ACC 4LGT 90 RD**

Prefix	Arm	Fixture Orientation	Base Shape	Weight	Finish	Package Dimensions
BRT - ACC	4LGT- 2SpokeArms	90 - 90 Degree	RD - Round SQ - Square	4" - 4 lbs approx 5" - 5.5 lbs approx	BLK - Black BRZ - Dark Bronze GMG - Gun Metal Gray MSV - Metallic Silver WHT - White CM - Custom	90 - 27x27x8inches

PRODUCT DIMENSIONS



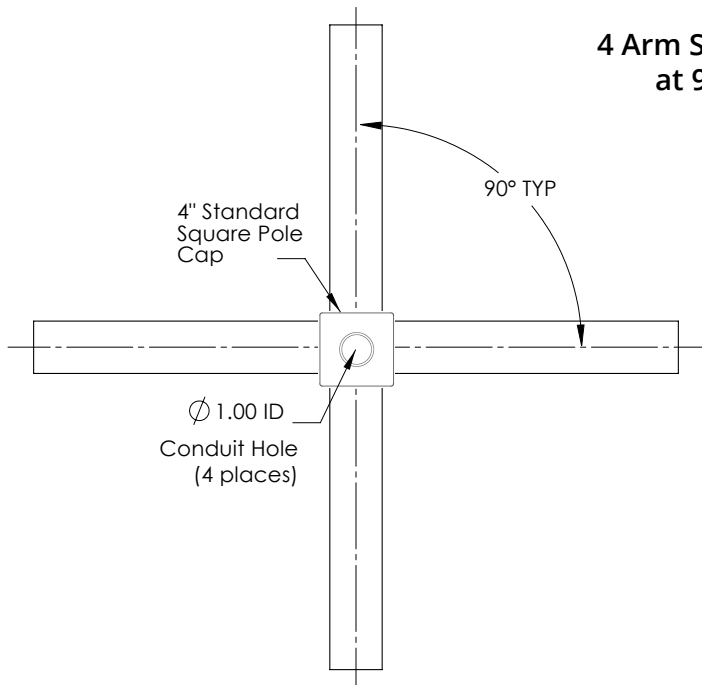
**4 Arm Spoke Bracket
at 90 Degree**

Spoke Arm Flood Lighting

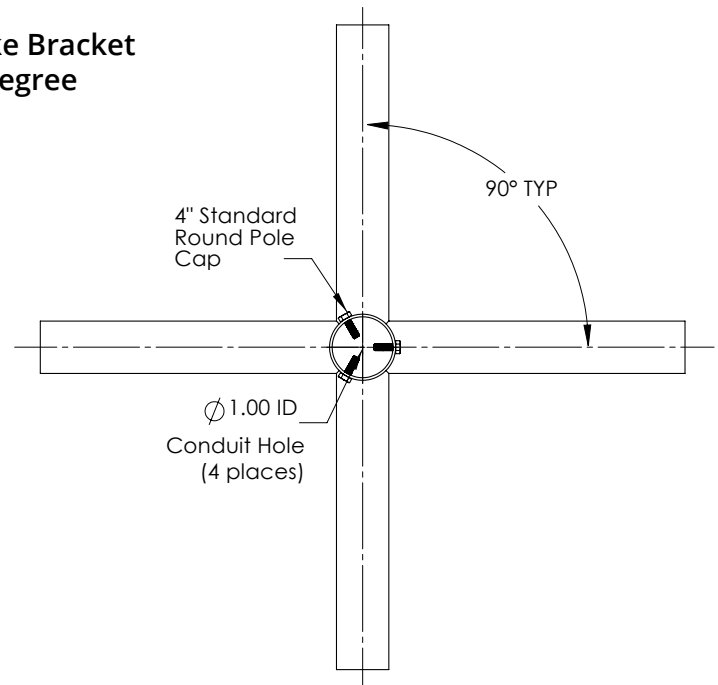
[Back to Quick Links](#)

PRODUCT DIMENSIONS

4 Arm Spoke Bracket at 90 Degree



BRT-ACC-4LGT-90-SQ



BRT-ACC-4LGT-90-RD