

# Bullhorn Flood Lighting 2 Tenon Adapter

## Internal Pole Top Slip Fitter



### FEATURES & SPECIFICATIONS

- Bullhorn flood lighting internal slip fitter slips inside the top of a square or round straight pole for a virtually seamless transition from pole to post top light fixtures.
- Rugged Die Cast Steel tenon fitter
- EPA: 1.8
- Finish: Standard Dark Bronze
- Each tenon on top has a 2 2/8 inch outside diameter allowing you to seamlessly integrate Bright LED lighting fixtures with a standard 2 4/8 inch slip fitter.
- Removable end caps are easy access to wires connection, installation, and replacing the existing post top mount.
- Optional: Bullhorn can be finished with Bright LED's polyester powder coat finishing process. This finish withstands extreme weather changes without cracking or peeling. Other standard finishes also available. Consult factory.
- Optional: Base that fits over a 2-7/8 inch or 4 inch Tenon are available. Contact sales.

### ORDERING GUIDE

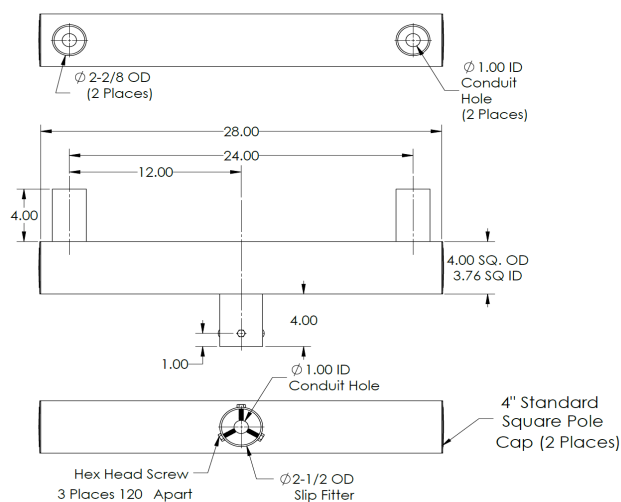
TYPICAL ORDER EXAMPLE: **BRT ACC TV2 RD**

Prefix	Bullhorn Shape	Base Sizes	Weight	Finish	Package Dimensions
<b>BRT - ACC - TV2</b>	<b>SQ</b> - Square	2-1/2 inches	21lbsapprox	<b>BLK</b> - Black	<b>SQ</b> - 32x13x4inches
	<b>RD</b> - Round	2-7/8 inches		<b>BRZ</b> - Dark Bronze	<b>RD</b> - 32x13x5inches
	<b>RDBD</b> - Round Body	4inches		<b>GMG</b> - Gun Metal Gray	<b>RDBD</b> - 32X12X4inches
				<b>MSV</b> - Metallic Silver	
				<b>WHT</b> - White	
				<b>CM</b> - Custom	

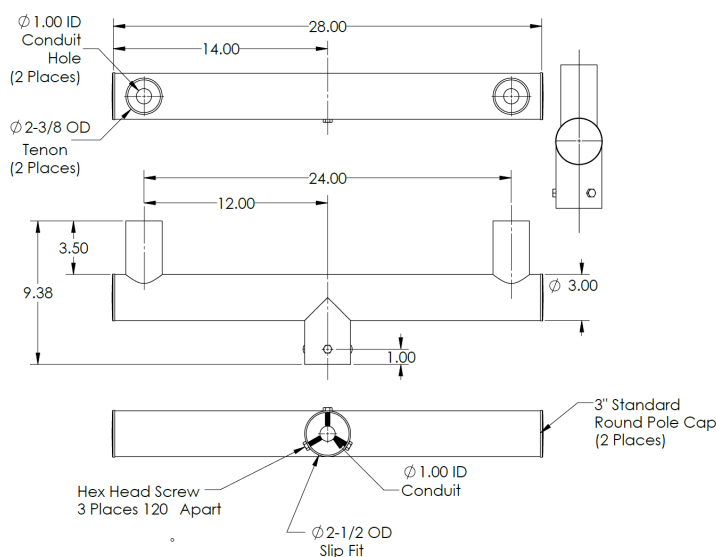
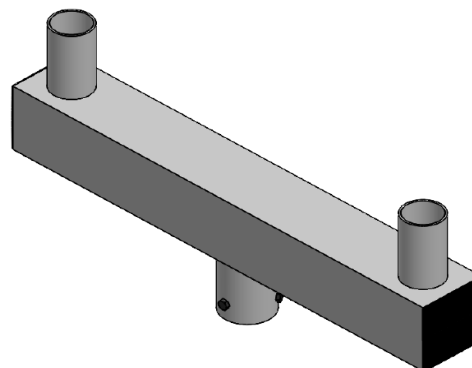
# Bullhorn Flood Lighting 2 Tenon Adapter

[Back to Quick Links](#)

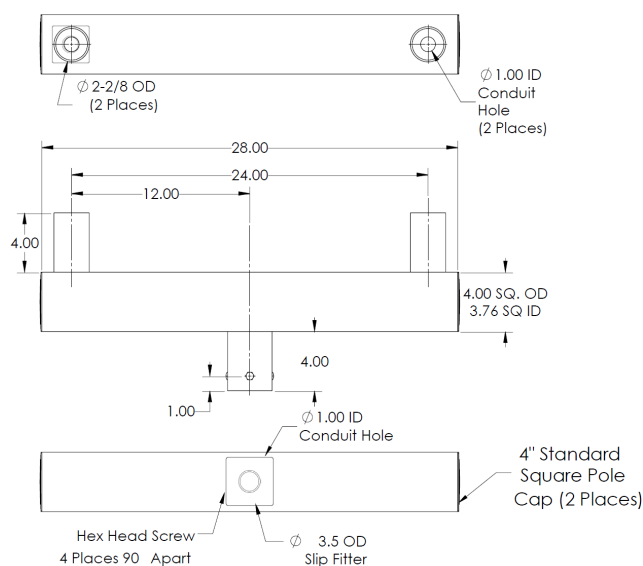
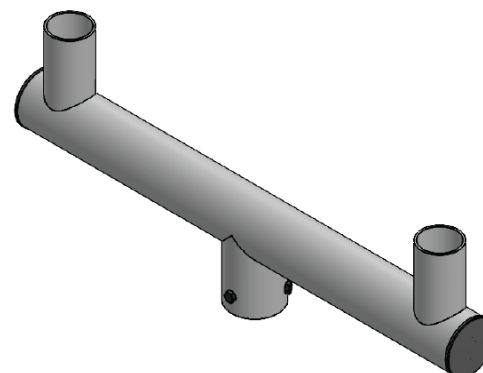
## PRODUCT DIMENSIONS



**BRT-ACC-TV2-RD**



**BRT-ACC-TV2-RDBD**



**BRT-ACC-TV2-SQ**

