

# Bullhorn Flood Lighting 4 Tenon Adapter

## Internal Pole Top Slip Fitter



### FEATURES & SPECIFICATIONS

- Bullhorn flood lighting internal slip fitter slips inside the top of a square or round straight pole for a virtually seamless transition from pole to post top light fixtures.
- Rugged Die Cast Steel tenon fitter
- EPA: 2.5
- Finish: Standard Dark Bronze
- Each tenon on top has a 2 2/8 inch outside diameter allowing you to seamlessly integrate Bright LED lighting fixtures with a standard 2 4/8 inch slip fitter.
- Removable end caps are easy access to wires connection, installation, and replacing the existing post top mount.
- Optional: Bullhorn can be finished with Bright LED's polyester powder coat finishing process. This finish withstands extreme weather changes without cracking or peeling. Other standard finishes also available. Consult factory.
- Optional: Base that fits over a 2-7/8 inch or 4 inch Tenon are available. Contact sales.

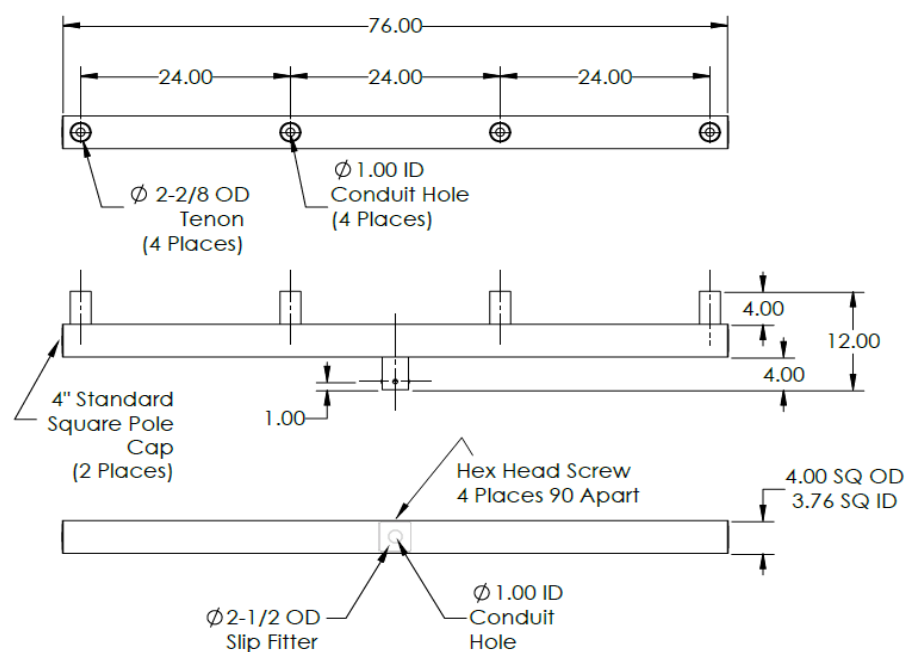
### ORDERING GUIDE

TYPICAL ORDER EXAMPLE: **BRT ACC TV4 IN RD**

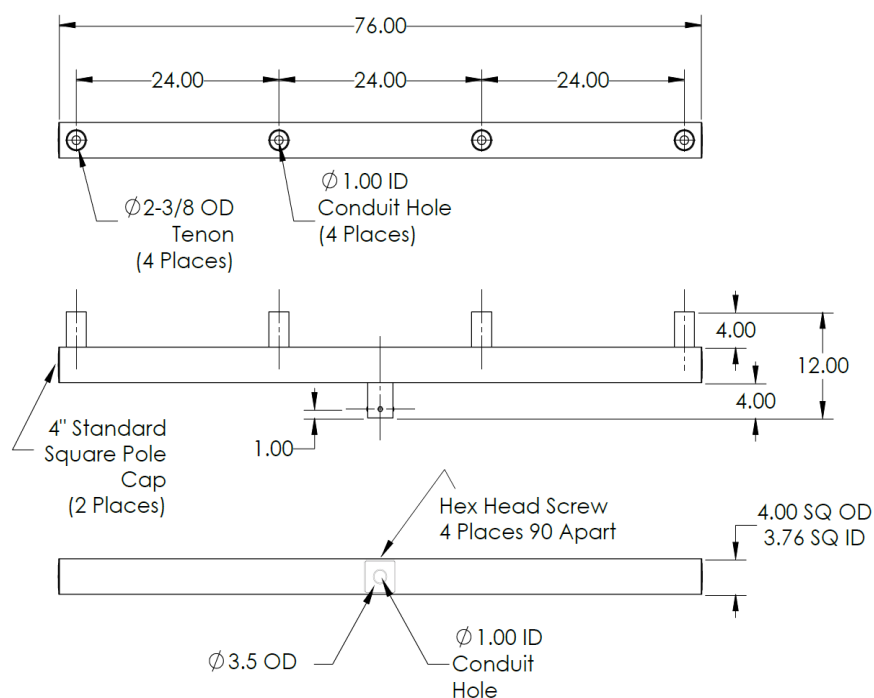
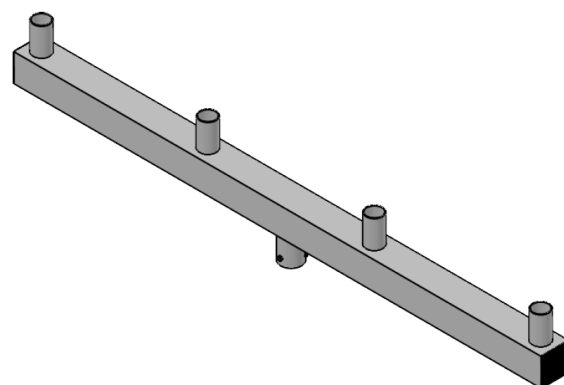
Prefix	Bullhorn Type	Bullhorn Shape	Base Sizes	Weight	Finish	Package Dimensions
<b>BRT - ACC - TV4</b>	<b>IN</b> - Inline	<b>SQ</b> - Square	2-1/2 inches	<b>IN</b> - 52 lbsapprox	<b>BLK</b> - Black	<b>IN</b> - 82x15x6inches
	<b>PLS</b> - 90 Degree/Plus	<b>RD</b> - Round	2-7/8 inches 4 inches	<b>PLS</b> - 45.5 lbsapprox	<b>BRZ</b> - Dark Bronze <b>GMG</b> - Gun Metal Gray <b>MSV</b> - Metallic Silver <b>WHT</b> - White <b>CM</b> - Custom	<b>PLS</b> - 40x40x12inches

# Bullhorn Flood Lighting 4 Tenon Adapter

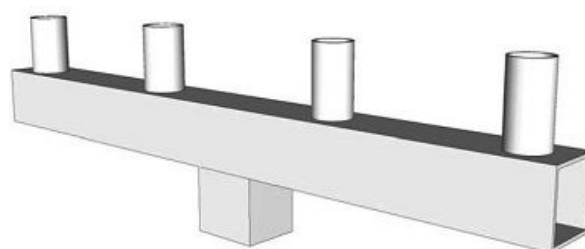
## PRODUCT DIMENSIONS

[Back to Quick Links](#)


**BRT-ACC-TV4-IN-RD**

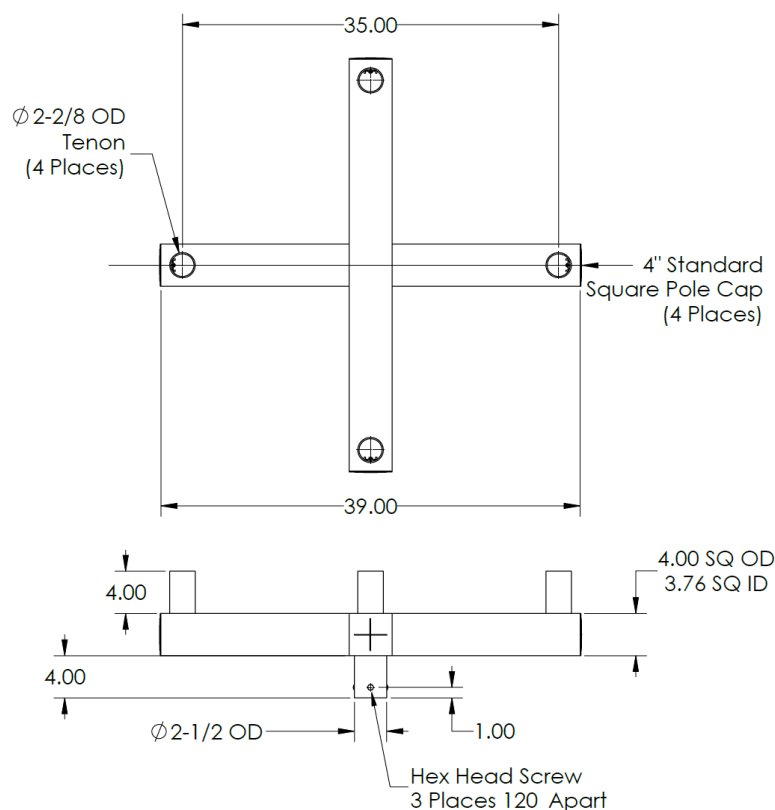


**BRT-ACC-TV4-IN-SQ**

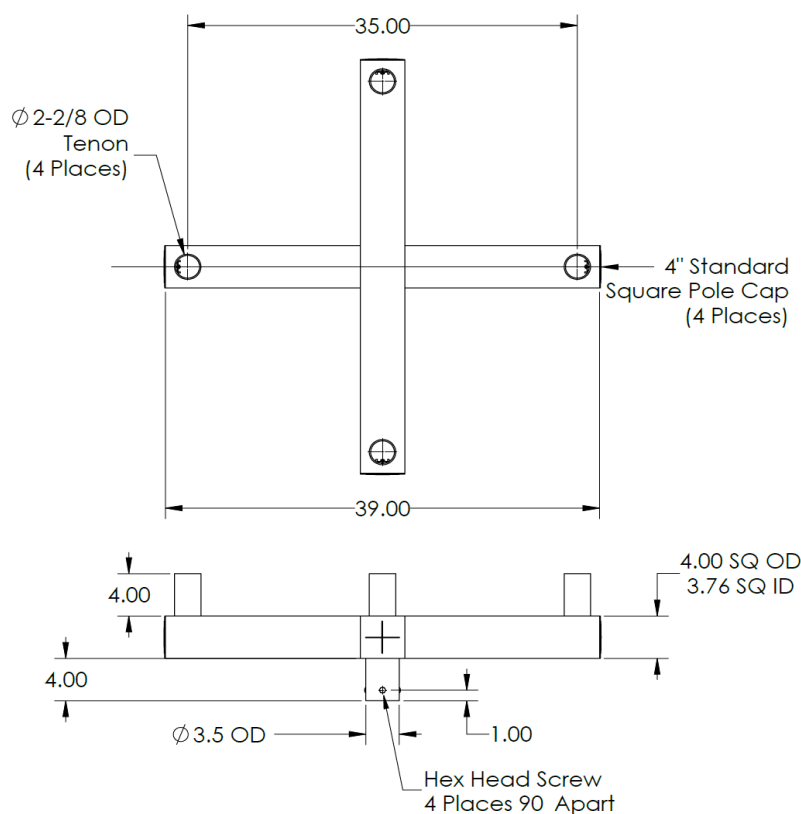
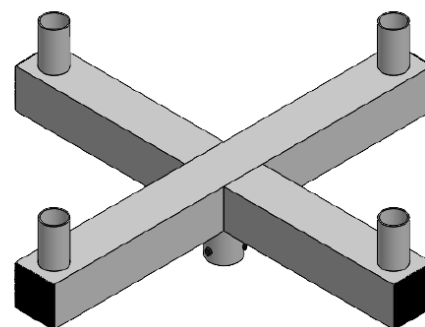


# Bullhorn Flood Lighting 4 Tenon Adapter

## PRODUCT DIMENSIONS

[Back to Quick Links](#)


**BRT-ACC-TV3-Y-RD**



**BRT-ACC-TV3-Y-SQ**

